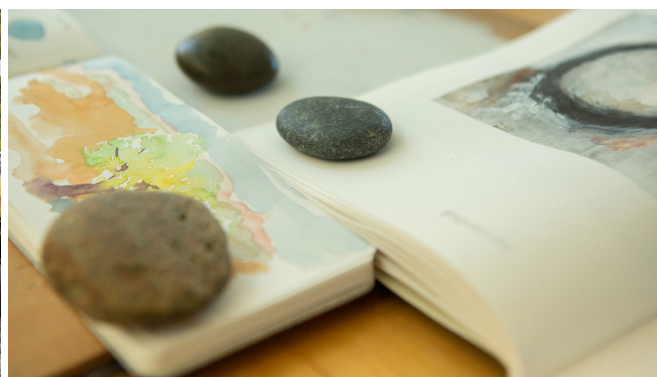


2023 RESUME + CV
CHUCK HOFFMAN + PEG CARLSON-HOFFMAN





ART.EARTH.SPIRIT

We tend to live and work on the borders and boundaries. We create bridges on those borders by making art. We live on neither side but cross back and forth trying to learn. Borders, edges, and intersections offer places of tension, action, and reactions. Whether it is a border of forest and meadow, the edge where water meets land, or invisible boundaries of culture, we hold space, learn, and listen.

All our creative work is a result of collaboration. We go beyond the conceptual sense, to include working together on the same canvas. We paint at the same time, forging ideas together that neither of us could create alone. The creative tension gives rise to a unique voice, one that is not of compromise, but of something new. It becomes both personal and universal at the same time.

We feel something unprecedented is required from us now if we are to survive and thrive in our changing climate and that must be grounded in wholeness. It is who we are and how we see through an artistic lens that holds potential for the radical leap to re-form our relationships with the earth and each other. We bring this process into our workshops where we create paintings and art projects in large groups, much the same way we create our own work.



Chuck Hoffman + Peg Carlson-Hoffman

ARTISTS.PEACEMAKERS.COMMUNITY BUILDERS

*The arts help us awaken to our interdependence with one another,
and ultimate wholeness and unity with our earth.*

— PEG CARLSON-HOFFMAN + CHUCK HOFFMAN | GENESIS + ART

GLACIER PEAK WILDERNESS: *At the Edges of Wilderness*



Ancient Texts

Chuck Hoffman + Peg Carlson-Hoffman
2018 Acrylic on canvas
40.6cm x 40.6cm (16in x 20in)
© Genesis + Art



Blue Fog of January

Chuck Hoffman + Peg Carlson-Hoffman
2018 Acrylic on canvas
40.6cm x 40.6cm (16in x 20in)
© Genesis + Art



Morning Mist

Chuck Hoffman + Peg Carlson-Hoffman
2018 Acrylic on canvas
40.6cm x 40.6cm (16in x 20in)
© Genesis + Art

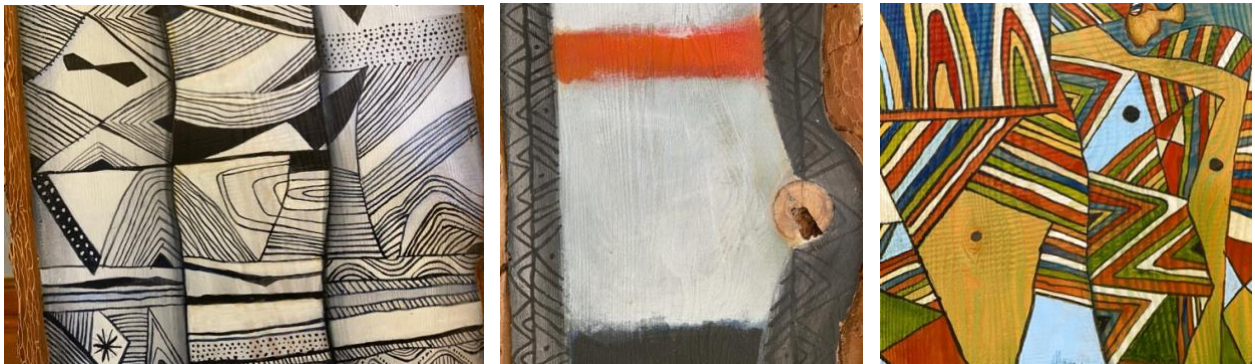
Artist's Statement

THIS SERIES WAS CREATED WHILE LIVING IN THE REMOTE WILDERNESS OF THE CASCADE MOUNTAINS IN WASHINGTON STATE.

Nature is the sacred text of creation. The cycles of the seasons offer us deep wisdom if we are to see, listen, and be open to wonder. When we honor the earth as our original sacred space it will show us ways in which we can connect and reveal a way forward. But we live in what we might call an age of forgetting. We have forgotten who we are in relation to everything else: the creatures, the plants, the mountains, the forests, the oceans, one another, and even ourselves.

This series of paintings reflect listening and our time living in the remote wilderness exploring boundary as the edge or margin where things connect and find new beginnings. While our paintings are a study of edges, boundaries, and contrasts coming together, our continuing narrative inspiration is about bearing tension. The boundaries and edges are not divisions but the places that hold tension and allow something new to rise from the struggle. For us, tension is a place where we sense the breath of Spirit moving and creating within and through each of us. As our paintings progressed, we realized that part of what we were painting was the aftermath of the forest fire we experienced in 2015. The edges of the Wolverine fire that surrounded us contained immense destructive power, but also set the table for the re-birthing of the forest and the beauty that followed. Living on this wilderness boundary, and in that tension, we have born witness to the earth's resurrection. — Peg Carlson-Hoffman + Chuck Hoffman

HOLDEN VILLAGE, WASHINGTON: *Soul Totems*



DETAILS

Soul Totems

Chuck Hoffman + Peg Carlson-Hoffman

2020 Acrylic on salvaged trees from the Wolverine fire, milled and sanded

Various sizes from 4 to 8 feet in length

Photographed in the wilderness

© Genesis + Art

Artist's Statement

THIS SERIES WAS CREATED WHILE LIVING IN THE REMOTE WILDERNESS OF THE CASCADE MOUNTAINS IN WASHINGTON STATE.

Our Soul Totems are a reflection from our time living in the remote wilderness. We listened and watched the forest, responding to its beauty of the trees and its story left after the Wolverine Fire of 2015. The chaos of the fire and its immense destructive power gave way to the forest's resurrection, new growth, and beauty in the process. When everything is uncertain, everything that is important becomes clear. We walked on the path of Earth's wonder. As we are faced with the reality of climate change, the web of all life, and its impact on our earth home, we continue to form many questions. What shall we do now? How can we protect the most vulnerable of our fellow humans from prejudice and violence? How might we find our way in our modern world to understand the Earth as a gift, not to exploit, to make our relationship with the world sacred again? Whatever happens next, the cultural conversation about nature will require us to come together with our earth community to face what lies ahead. There is power in unity. What happens to one happens to all. We can starve together or feast together. Our flourishing is mutual. Our art is created upon salvaged trees from the fire, milled and sanded for our painting surface.

– Peg Carlson-Hoffman + Chuck Hoffman

FARWELL, MINNESOTA: *Soul Totems*



Hazards Unknown

Chuck Hoffman + Peg Carlson-Hoffman
Hoffman 2021 Acrylic on milled wood
127cm (14in x 50in)
© Genesis + Art

Once in a Blue Moon

Chuck Hoffman + Peg Carlson-Hoffman
2021 Acrylic on milled wood
30.5cm x 127cm (12in x 50in)
© Genesis + Art

Rhythms + Chaos

Chuck Hoffman + Peg Carlson-Hoffman
2021 Acrylic on milled wood 35.5cm x
27.9cm x 121.9cm (11in x 48in)
© Genesis + Art

Railroad Creek

Chuck Hoffman + Peg Carlson-Hoffman
2021 Acrylic on milled wood
35.5cm x 127cm (14in x 50in)
© Genesis + Art

Good Courage

Chuck Hoffman + Peg Carlson-Hoffman
2021 Acrylic on milled wood
35.5cm x 124.4cm (14in x 49in)
© Genesis + Art

The 8301

Chuck Hoffman + Peg Carlson-Hoffman
2021 Acrylic on milled wood
33cm x 121.9cm (13in x 48in)
© Genesis + Art

Rainbirds

Chuck Hoffman + Peg Carlson-Hoffman

2021 Acrylic on milled wood

35.5cm x 127cm (14in x 50in)

© Genesis + Art



Artist's Statement

THIS SERIES WAS CREATED WHILE LIVING IN A CABIN ON A SECLUDED LAKE IN WESTERN MINNESOTA

We have continued to reflect on our time in the remote wilderness by creating Soul Totems painted on burned logs salvaged from the 2015 Wolverine Fire that burned over 65,323 acres in the Railroad Creek, Entiat, and Lake Chelan watersheds in Central Washington.

YAKAMA TRIBAL NATION, WASHINGTON: *Painted Rivers*



Painted Rivers – Banner Cloths

Chuck Hoffman + Peg Carlson-Hoffman
2017 Acrylic on canvas
10.6cm x 152.4cm (4in x 60in)
© Genesis + Art

Wrapped Rocks

Peg Carlson-Hoffman
2017 Found Rocks and yarns
© Genesis + Art

Artist's Statement

THIS SERIES WAS CREATED WHILE LIVING IN THE REMOTE WILDERNESS OF THE CASCADE MOUNTAINS IN WASHINGTON STATE.

Our work with Railroad Creek began in 2015. Abandoned in 1957, the Holden Mine contaminated groundwater with five toxic metals including aluminum, cadmium, copper, iron, and zinc. These heavy metals washed downstream, polluting water in Railroad Creek, a major tributary to Lake Chelan. The metals also created a hazardous, hard orange coating known as ferricrete on the streambed. Unstable waste rock and tailings piles from approximately 10 million tons of mined ore further compounded the problem.

As Executive Directors of Holden Village, we lived next to Railroad Creek for 6 years. We learned and worked with the US Forest Service, the Yakama Nation, The Department of Ecology, and Rio Tinto. The water cleanup was a huge project requiring sacrifice from all parties involved. During that time, plans were devised, a water treatment plant was constructed, and, for the first time in nearly 60 years, clean water began flowing in Railroad Creek. It was an important milestone and a significant win for aquatic and wildlife species, and humans that depend on water from Railroad Creek and Lake Chelan.

One of the more significant events was a tribal blessing of the waters and the surrounding lands conducted by the Yakama Nation, whose ancestral lands were exploited, and whose waters were poisoned. As a way of honoring the Yakama and the water itself we created painted rivers, as gifts for their Chief, Yellow Wash. The Railroad Creek experience drew us to explore more rivers and watersheds. It inspired a deeper and more informed interest in water, its fragility, and created a passion to protect it. It also continues to inspire our work as this precious resource becomes more and more vulnerable.

HOLDEN VILLAGE, WASHINGTON: *Earth Prayer Canvas Project*



Artist's Statement

THIS SERIES WAS CREATED WHILE LIVING IN THE REMOTE WILDERNESS OF THE CASCADE MOUNTAINS IN WASHINGTON STATE.

Our Earth Prayer Canvas focuses us as we explore and reclaim an earth-based spiritual practice. The canvas grounds us to celebrate earth and nature and deepen our relationships to earth, air, water, fire, and its creatures. The Earth Prayer Canvas, along with words, music, and nature recordings center the spirit to be alive with beauty, love for creation, and the wisdom it teaches.

A Word About Our Non-Representational Art

As artist's, the world speaks to us in metaphor, symbol, shape, and color. A visual language that is rich in meaning, connection, and inspiration. Our art is nearly always non-representational. The purpose of this porous visual language is to leave art and the reality to which it points, open to the experience of the viewer. We trust that the viewer will continue the image and finish the thought, out of their particular experience. That requires the kind of rich metaphorical language that is open and multifaceted. Very often viewers of abstract art want an explanation, which means to slot the meaning into categories already predetermined and controlled. – Peg Carlson-Hoffman + Chuck Hoffman





RESUMÉ

Peg Carlson-Hoffman + Chuck Hoffman

Email: studio@genesisart.org

w. genesisart.org c. 321.297.4081

EDUCATION — PEG

1977 Augustana College, Rock Island, Illinois
BA – Education + Painting

University of Iowa, Iowa City, Iowa
Graduate Studies in Lettering

St. Ambrose University, Davenport, Iowa
Graphic Design, Typography and Calligraphy

Rochester Institute of Technology, Rochester, New York
Continuing Studies in Lettering and Typography

Scarritt Bennett, Nashville, TN
Liturgical Design Conference, Worship Planning, Painting, Sculpture

EDUCATION — CHUCK

2011 Luther Seminary, Saint Paul, Minnesota
MA – Art + Theology

1979 Miami University, Oxford, Ohio
BFA – Graphic Design + Painting

Maryland Institute of Art and Design, Baltimore, MD
Continuing Studies in Painting

Corcoran School of Art, Washington, DC
Continuing Studies in Film Making

Wesley Theological Seminary, Washington, DC
Continuing Studies in Art + Theology



SOLO EXHIBITIONS

2023 Hopkins Center for the Arts, Hopkins, Minnesota
At the Edge of Wilderness

2023 Bethlehem Lutheran Church Gallery, Minneapolis, Minnesota
At the Edge of Wilderness

2022 St. Paul's Monastery, St. Paul, Minnesota
At the Edge of Wilderness

2020 Holden Village Pop-Up Art Exhibition, Chelan, Washington
Soul Totems

2019 Holden Village Art Gallery, Chelan, Washington
At the Edges of Wilderness

2019 Holden Village Koinonia, Chelan, Washington
Beneath the Surface

2019 Bethlehem Lutheran Church Gallery, Minneapolis, Minnesota
Beneath the Surface

2018 St. Paul's Monastery, Saint Paul, Minnesota
Beneath the Surface

2017 Luther Seminary, Saint Paul, Minnesota
Beneath the Surface

2016 United Theological Seminary Bigelow Chapel, New Brighton, Minnesota
Beneath the Surface

2013 Bethlehem Lutheran Church Gallery, Minneapolis, Minnesota
Intersections: Finding our Common Ground

2013 St. Paul's Monastery, Saint Paul, Minnesota
Heaven of the Heart: Art as an Act of Reconciliation

2013 William Jewell College Stocksdale Gallery, Kansas City
Intersections: Finding our Common Ground



2012 Hobbs Open Studio Event, Kansas City
Heaven of the Heart: Art as an Act of Reconciliation

2012 19 Below Gallery, Kansas City
The New Jerusalem Series

2011 Lutheran Mideast Development, Minneapolis, Minnesota
Works of Reconciliation

2011 Saint Paul School of Theology Gallery, Kansas City
Works of Reconciliation

2011 Skanois Project Gallery, East Belfast, Northern Ireland
The New Jerusalem Series

2011 19 Below Gallery, Kansas City, Missouri
The New Jerusalem Series

2011 UTS Bigelow Chapel, New Brighton, Minnesota
The New Jerusalem Series

2011 Gloria Dei Lutheran Church Gallery, Saint Paul, Minnesota
The New Jerusalem Series

2011 Bethlehem Lutheran Church Gallery, Minneapolis, Minnesota
The New Jerusalem Series

2010 Central Lutheran Church Gallery, Minneapolis
Works of Reconciliation

2010 Luther Seminary, Saint Paul, Minnesota
The New Jerusalem Series

2010 UTS Bigelow Chapel, New Brighton, Minnesota
Works of Reconciliation

2010 Saint Andrew Lutheran Church, Mahtomedi, Minnesota
The New Jerusalem Series

2010 Saint Anthony Lutheran Church, Saint Paul, Minnesota
Works of Reconciliation



2009 Luther Seminary, Saint Paul, Minnesota
Works of Reconciliation

2009 19 Below Gallery, Kansas City, Missouri
Works of Reconciliation

2009 Garmin Corporate Gallery, Olathe, Kansas
Works of Reconciliation

2008 Hobbs Open Studio, Kansas City, Missouri
Works of Reconciliation

2008 Saint Paul School of Theology, Kansas City, Missouri
Works of Reconciliation

2008 Imago Dei Gallery, Kansas City, Kansas
Works of Reconciliation

2008 19 Below Gallery, Kansas City, Missouri
Works of Reconciliation

2007 Forthspring Inter Community, Belfast, Northern Ireland
Works of Reconciliation

2007 Hobbs Open Studio Event, Kansas City, Missouri
Works of Reconciliation

GROUP EXHIBITIONS

2023 White Bear Center for the Arts, White Bear Lake, Minnesota
Northern Lights - Juried Exhibition – Railroad Creek

2023 Phipps Center for the Arts, Hudson, Wisconsin
Ruby Red - Juried Exhibition - Dabar

2022 Bethlehem Lutheran Church, Minneapolis, Minnesota
Dabar

2021 Minneapolis Institute of Arts, Minneapolis, Minnesota
Foot in the Door - Virtual Exhibition



2019 United States Forest Service Gallery, Stehekin, Washington
At the Edges of Wilderness

2019 Holden Village Art Gallery, Chelan, Washington
At the Edges of Wilderness

2013 The Basilica of Saint Mary, Minneapolis, Minnesota
The Prodigal Son Exhibition

2013 Saint Xavier University, Chicago, Illinois
Revelations: Interrogating the Sacred

2012 St. Paul's Monastery, St. Paul, Minnesota, Minnesota
Curated

2011 MacLaurin CSF / Hennes Gallery, Minneapolis, Minnesota
Interstice(s)–Intervening Space: Curated

2011 ECVA, New York, New York
Imaging the Sacred Art of Chant: Curated

2011 ECVA, New York, New York
Word and Example: Curated

2011 Dayton Avenue Presbyterian Church, Saint Paul, Minnesota
Works of Reconciliation

2010 ECVA, New York, New York
Seeking and Serving: Curated

2010 ECVA, New York, New York
Worship & Communion: Curated

2010 ECVA, New York, New York
Justice & Peace: Curated

2010 A Minnesota Without Poverty, Minneapolis, Minnesota
Touring Social Justice MN Exhibition – Invitation

2011 UTS, New Brighton, Minnesota
Works of Reconciliation



2009 ECVA, New York, New York

Gifts: Curated

2009 White Stone Gallery, Philadelphia, Pennsylvania

Contemporary Biblical Arts: Juried

2008 Imago Dei Gallery, Kansas City, Kansas

With Joy and Thanksgiving: Juried - Timothy Botts

2005 Azusa Pacific University Gallery, Los Angeles, California

CIVA Embracing the Gift: Juried

2002 Orlando Museum of Art, Orlando, Florida

Juried Exhibition

2001 St. Luke's UMC, Orlando, Florida

Preparing a Space: Four Advent Journey's

COMMISSIONS

2023 Lutheran World Federation, Krakow, Poland

World Prayer Canvas

2023 Paul & Melissa Steen, Santa Rosa, California

Personal Collection

2022 Erik & Heather VanNest, Des Moines, Iowa

Personal Collection

2021 Erik & Heather VanNest, Raleigh, North Carolina

Personal Collection

2020 Holden Village, Chelan, Washington

Sacred Earth Prayer Canvas

2020 Holden Village, Chelan, Washington

Soul Totems

2019 Holden Village, Chelan, Washington

Sacred art for Koinonia sanctuary space



2019 Paul & Melissa Steen, Edina, Minnesota
Personal Collection

2014 Quo Vadis Interfaith Dialogue Center, Tamil Nadu, India
Interfaith Art Project – Prayer Canvas

2014 Abbeyfield & Wesley Mural Project, Belfast, Northern Ireland
Community Street Mural

2013 Short Strand Mural Project, East Belfast, Northern Ireland
Community Street Mural

2012 East Belfast Mission & Skanois Project, East Belfast, Northern Ireland
Sacred art and liturgical art for chapel and sanctuary space

2012 East Belfast Mission & Skanois Project, East Belfast, Northern Ireland
Community Street Mural

2011 Luther Seminary, Saint Paul, Minnesota
Prodigal Son Collection

2010 Luther Seminary, Saint Paul, Minnesota
Office of the President Christmas Card

2009 Mr. & Mrs. David Sisney, Kansas City, Missouri
Personal Collection

2008 Gary Marx & Pam Kelley, Carbondale, Illinois
Personal Collection

2007 Forthspring Inter Community, Belfast, Northern Ireland
Sacred Art Collection

2007 Mr. & Mrs. George Robbins, Kansas City, Missouri
Personal Collection

PUBLIC + CORPORATE COLLECTIONS

2023 Lutheran World Federation, Geneva, Switzerland
World Prayer Canvas



2023 Bethlehem Lutheran Church, Minneapolis, Minnesota

2020 Holden Village Collection, Chelan, Washington

2019 Holden Village Collection, Chelan, Washington

2017 Still Point Gallery, Atlanta

2016 Bethlehem Lutheran Church, Minneapolis, Minnesota

2014 Skainos Community Chapel, East Belfast, Northern Ireland

2012 Jerry Evenrud Prodigal Son Collection, Saint Paul, Minnesota

2011 Luther Seminary, Saint Paul, Minnesota

2011 Bethlehem Lutheran Church, Minneapolis, Minnesota

2008 Luther Seminary, Saint Paul, Minnesota

2008 Museum of Biblical Art, Dallas, Texas

2007 Forthspring Inter Community Center, Belfast, Northern Ireland

PRIVATE COLLECTIONS

2023 Paul & Melissa Steen, Santa Rosa, California

2022 Erik & Heather VanNest, Des Moines, Iowa

2021 Erik & Heather VanNest, Raleigh, North Carolina

2019 Sharon Varallo, Rock Island, Illinois

2018 Sharon Varallo, Rock Island, Illinois

2013 Mr. & Mrs. Dale Wassorgord, Kansas City, Missouri

2013 Mr. & Mrs. Dale Wassorgord, Kansas City, Missouri

2012 Ms. Karen Dismukes, Kansas City, Missouri



2011 Dr. & Mrs. Allen Montgomery, Minneapolis, Minnesota

2011 Matthew Rowland, Kansas City, Missouri

2010 Mr. & Mrs. Dale Wassorgord, Kansas City, Missouri

2009 Fr. Edgar Brenninkmeyer, SJ, Boston, Massachusetts

2009 Mr. & Mrs. Dale Wassorgord, Kansas City, Missouri

2009 Mr. & Mrs. Dale Wassorgord, Kansas City, Missouri

2009 John & Ye Hoffman, Seattle, Washington

2008 Mr. & Mrs. Rick Halterman, Kansas City, Missouri

2008 Fr. Josef Venker, SJ, Seattle, Washington

2008 Dr. Barbara Anne Keely, Minneapolis, Minnesota

2007 Mr. & Mrs. Dale Wassorgord, Kansas City, Missouri

2007 Rev. & Mrs. Adam Hamilton, Kansas City, Missouri

2007 Capt. Shannon Brusseau, USA, Savannah, Georgia

2007 Elizabeth Krolak, Rochester, Minnesota

2006 Robert & Yajing Hoffman, Dallas, Texas

2006 Mr. & Mrs. Aaron Beisly, Kansas City, Missouri

2006 Roger Samuel, Kansas City, Missouri

2005 Ann Lee Earnshaw, Jacksonville, Florida

2004 Dr. James Scelfo, Orlando, Florida

2002 Heather Keechel, Orlando, Florida



PUBLICATION + PRESS

2022 [Pacific Lutheran University – Wang Center Symposium](#)

2022 [PLU – At the Edge of Wilderness](#)

2020, 2019, 2018, 2017, 2016, 2012 Holden Village Voice

2019 [Public Lands Podcast](#)

2018 [A Peace of My Mind](#)

2015 [Seattle Times](#)

2015 [The Wenatchee World](#)

2015 [The Wenatchee World](#)

2012 [The University of Kansas](#)

2012 [The University of Kansas](#)

2011 SARTS Online Magazine Feature Artist Article

2011 EReview Online Magazine Show Review

2010, 2009 Story Magazine, Luther Seminary

2009 Imagine Magazine Feature Article

2009 ECVA Gallery Feature On Line Article

2009 ARTKc 365 On Line Feature

2008 Urban KC Feature Article



TEACHING

2023 Bethlehem Lutheran Church, Minneapolis, Minnesota
Art . Earth . Spirit – Creative Day Away

2022 St. Paul Area Synod, ELCA, St. Paul, Minnesota
Art . Earth . Spirit – Creative Day Away

2020 Holden Village Summer Faculty, Chelan, Washington
Art . Earth . Spirit

2019 Holden Village Summer Faculty, Chelan, Washington
Art . Earth . Spirit

2019 Arts in the Cascades, Holden Village, Chelan, Washington
Art . Earth . Spirit

2018 Holden Village Summer Faculty, Chelan, Washington
Art . Earth . Spirit

2017 Holden Village Summer Faculty, Chelan, Washington
Heaven of the Heart: Creating Space for Sacred Imagination

2014 Seattle University, School of Theology, Seattle, Washington
Sharing a Sacred Space: Turning to One Another with word + Symbol

2012, 2013 University of Kansas, Lawrence, Kansas, Adjunct Faculty
Art + Design for Social Change
School of Architecture, Design and Planning. Senior Design Think Tank Project,
East Belfast, Northern Ireland.

2013 William Jewell College, Liberty, Missouri, Mentor
Center for Justice and Sustainability

2006 – 2012 University of Kansas, Lawrence, Kansas
School of Architecture, Design and Planning.



WORKSHOPS

2020 Holden Village, Chelan, Washington

Reforming our Relationship with the Earth: The Universe Story

Peg Carlson-Hoffman + Chuck Hoffman, Hal Taussig

2014 Quo Vadis Interfaith Dialogue Center, Tamil Nadu, India

Interfaith Art Project

2013 William Jewell College, Liberty, Missouri,

Center for Justice and Sustainability Symposium

2013 Dar al Kalima College, Bethlehem, Palestine

Art as an Act of Reconciliation

2013 Ghost Ranch, Abiquiu, New Mexico, Summer Faculty

Heaven of the Heart: Creating Space for Sacred Imagination

2013 Ghost Ranch, Abiquiu, New Mexico, Summer Faculty

The Color of Silence

2012 Hallmark Cards, Kansas City, Missouri

Creative Renewal at Kearney farm

2012 Holden Village, Lake Chelan, Washington, Summer Faculty

2012 Ghost Ranch, Abiquiu, New Mexico, Summer Faculty

Heaven of the Heart: Creating Space for Sacred Imagination

2012 Presbyterian Church of Ireland, Belfast, Northern Ireland

Heaven of the Heart: Creating Space for Sacred Imagination

2011 Bethlehem Lutheran Church, Minneapolis, Minnesota

Art as an Act of Reconciliation

2011 East Belfast Mission & The Skanois Project, East Belfast, Northern Ireland

Painting as Prayer

2010 Luther Seminary, Saint Paul, Minnesota

Art as an Act of Reconciliation



LECTURES + PRESENTATIONS

2022 Pacific Lutheran University, Tacoma Washington

At the Edge of Wilderness: Healing and Transformation - Wang Center Symposium

2020 West Hills Church, Omaha, Nebraska

Art . Earth . Spirit – Virtual Webinar

2019 Holden Village, Chelan, Washington

Art . Earth . Spirit

2019 Holden Village, Chelan, Washington

Art for Social Change

2019 Arts in the Cascades, Holden Village, Chelan, Washington

Art . Earth . Spirit

2018 Holden Village Summer Faculty, Chelan, Washington

Art . Earth . Spirit

2017 Holden Village Summer Faculty, Chelan, Washington

Heaven of the Heart: Creating Space for Sacred Imagination

2014 Seattle University, Seattle, Washington

Heaven of the Heart: Creating Space for Sacred Imagination

2013 Ghost Ranch, Abiquiu, New Mexico

Heaven of the Heart: Creating Space for Sacred Imagination

2013 William Jewell College, Liberty, Missouri

Heaven of the Heart: Creating Space for Sacred Imagination

2012 Holden Village, Chelan, Washington

2011 MacLaurin CSF at University of Minnesota, Minneapolis

Art as an Act of Reconciliation

2011 Lutheran Mideast Development, Minneapolis

Art as an Act of Reconciliation



2011 Luther Seminary, Saint Paul
Art + Theology, Donor Presentation

2011 Bethlehem Lutheran Church, Minneapolis
Art as an Act of Reconciliation

2011 East Belfast Mission & The Skainos Project, East Belfast, Northern Ireland
Art as an Act of Reconciliation

2011 Gloria Dei Lutheran Church, Saint Paul, Minnesota
Art as an Act of Reconciliation

2011 Saint Andrew Lutheran Church, Mahtomedi, Minnesota
Art as an Act of Reconciliation

2010 A Minnesota Without Poverty, Minneapolis –
Nurturing the Creative Spirit

Presentation to the statewide assembly and leading creation of community art project designed to give voice for the poor and those working to eradicate poverty in Minnesota.

2010 Hallmark Creative Leadership Symposium, Kansas City, Missouri
Art as an Act of Reconciliation

2010 United Theological Seminary, New Brighton, Minnesota
Art as an Act of Reconciliation

2009 Foster White Gallery, Seattle, Washington
Art as an Act of Reconciliation

ARTISTS IN RESIDENCY

2014 Ghost Ranch, Abiquiu, New Mexico

2013 Skainos, East Belfast, Northern Ireland

2009-2011 Luther Seminary, St. Paul, Minnesota
Pioneered role as first full time artist in residence

2007 Forthspring Inter Community, Belfast, Northern Ireland